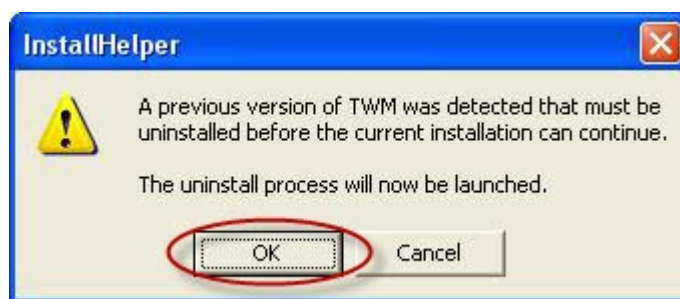


ECHOMETER TWM and Well Analyzer USB Drivers: Installation Guide for Windows XP

- If you haven't already downloaded **TWM**, do so [now](#).

TWM Installation

- If your Well Analyzer is currently connected, turn the power off and disconnect it.
- Install the Total Well Management software.
- If the installer finds the 2008 version of TWM on your machine, it must be uninstalled first.
Click "OK" to launch the uninstall process.



- Then click "Yes" run the uninstall.



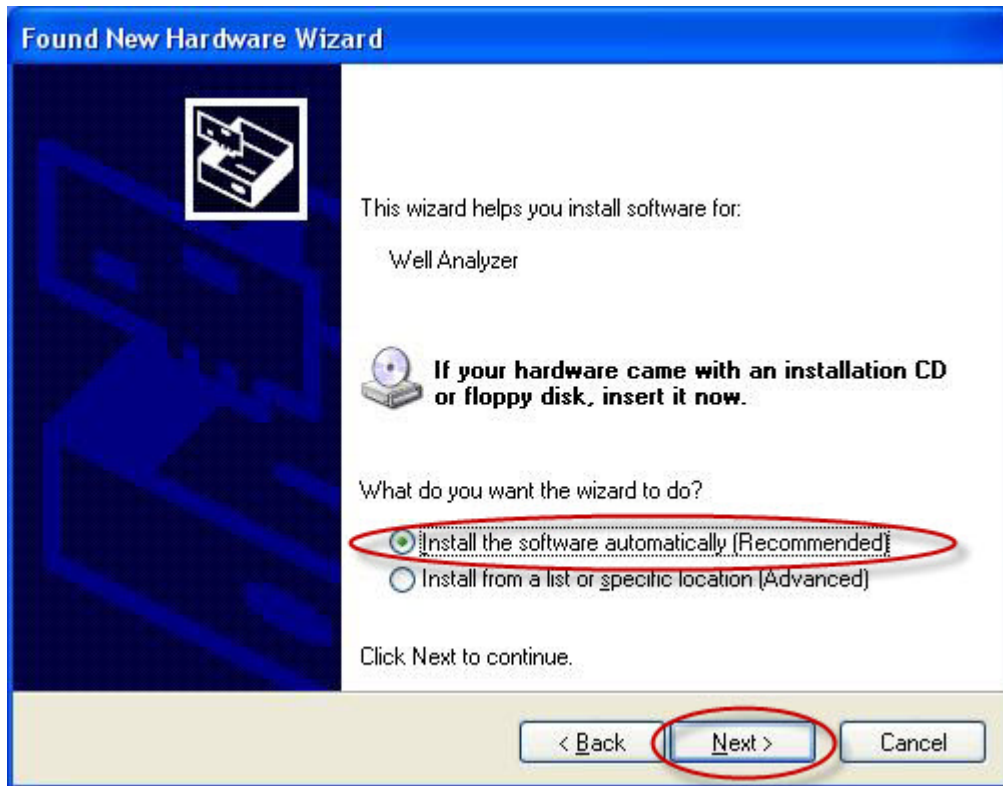
- After uninstalling the 2008 version, the installation will continue as normal.
- Connect the Well Analyzer to the USB port of your computer and turn on the Well Analyzer power.

Well Analyzer Driver Installation

- Windows XP uses a Found New Hardware Wizard to guide you through the installation process.
When it appears, select the "No, not this time" option and click "Next".



- On the next screen, "Install the software automatically" and click "Next".

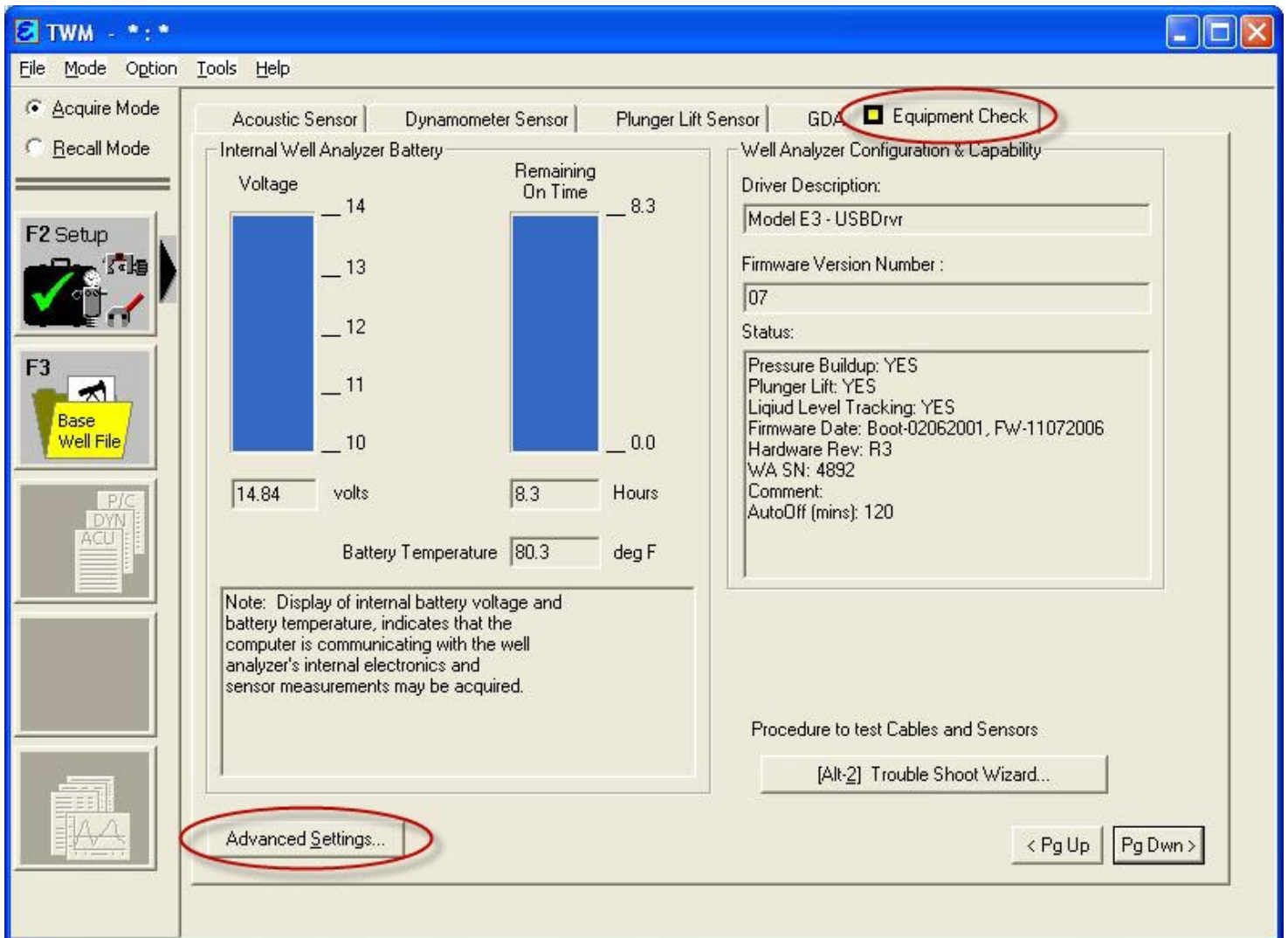


- The driver will be automatically installed. Click "Finish" to close the Wizard.

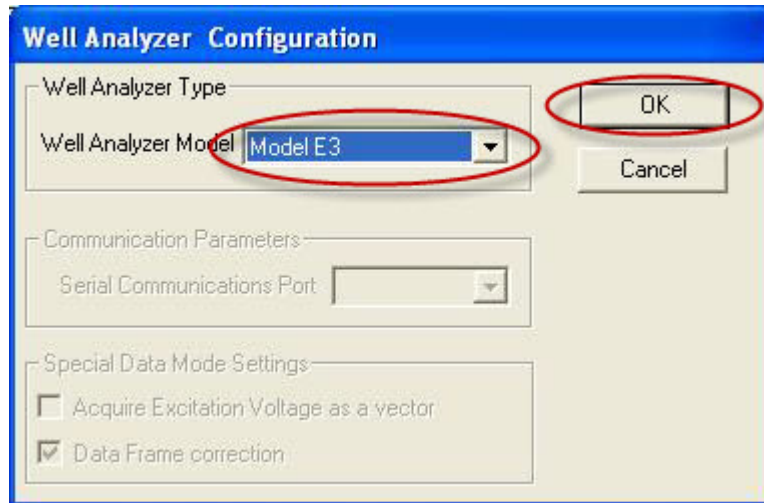
Well Analyzer Driver Verification

- Start TWM. Enter "Acquire Mode", select "Setup", and go to the "Equipment Check" tab.

This screen displays the status of the connected Well Analyzer.



- If the screen displays the message "UNABLE TO CONNECT TO WELL ANALYZER!", check settings. Click on the "Advanced Settings" button and select Well Analyzer Model E3.



You're done!